



Mapping global mining land-use and its induced deforestation using Earth observation

Dr Victor Maus

Institute for Ecological Economics
Vienna University of Economics and Business
victor.maus@wu.ac.at

ISIE-SEM Sep 21st, 2022

Except where otherwise noted, content on these slides is licensed under
[CC BY-SA 4.0 license](https://creativecommons.org/licenses/by-sa/4.0/)



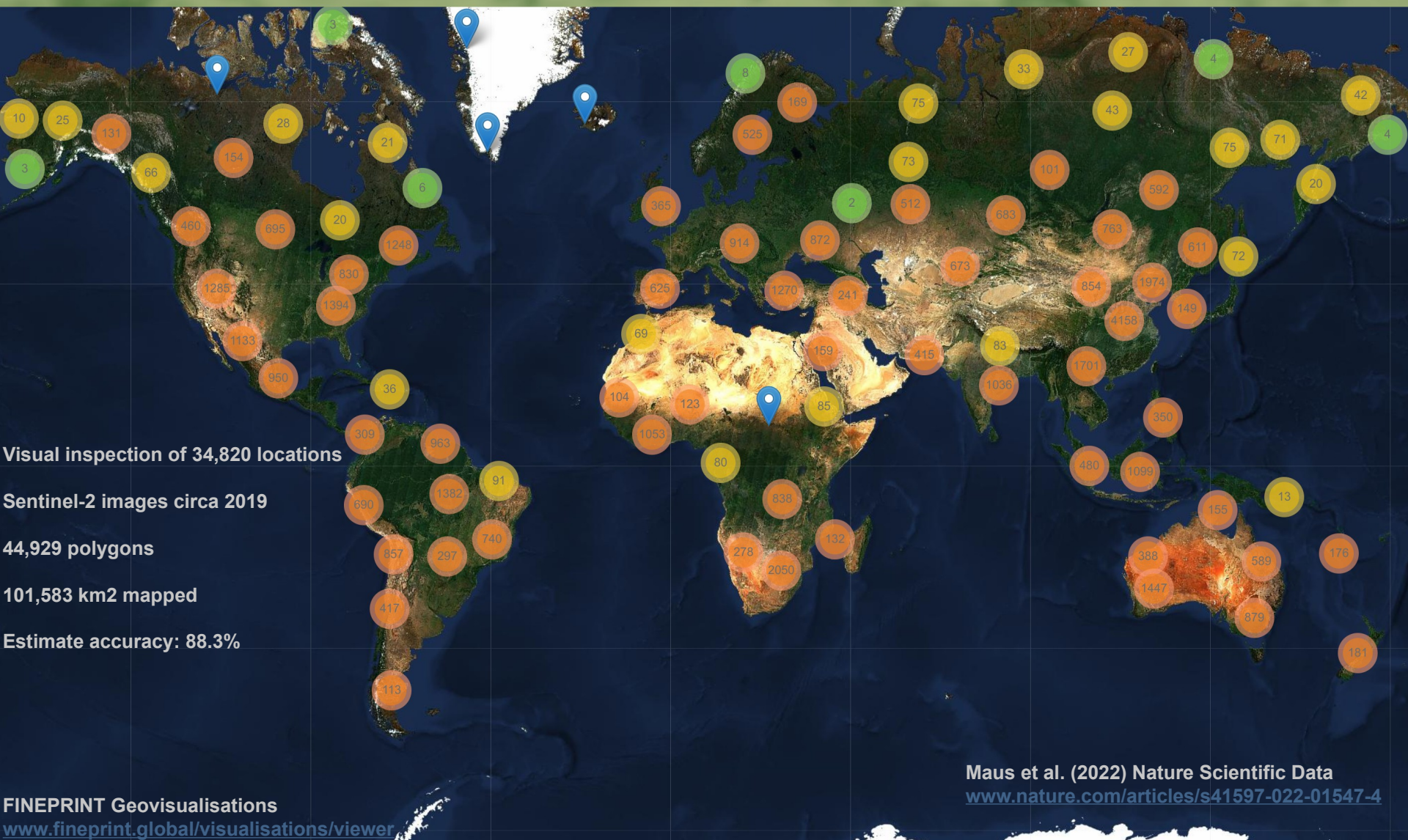
Mineral extraction is growing fast and we lack comprehensive geospatial information to assess its impacts



How to measure mining land use from massive Earth observation image archives



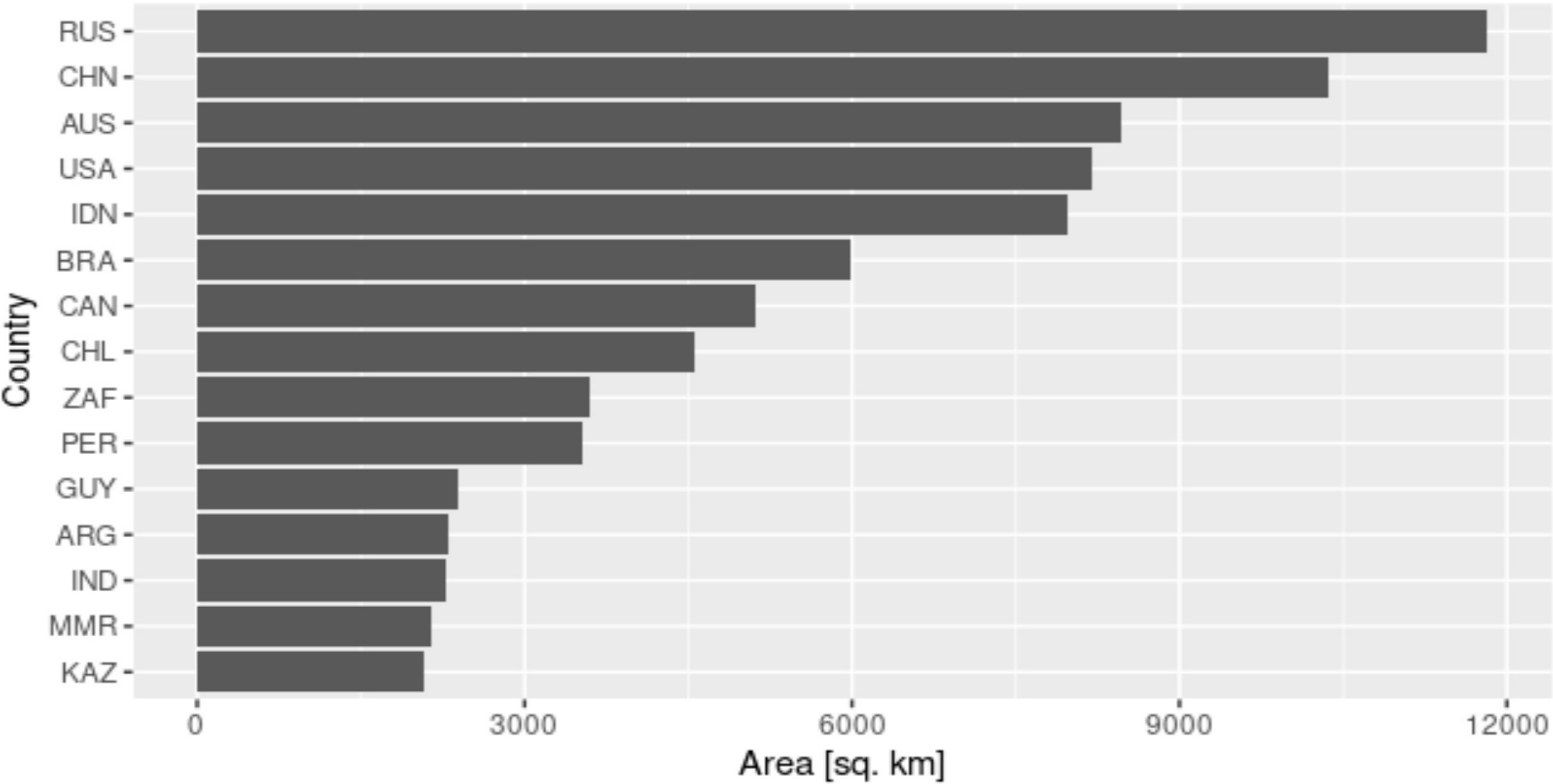
Image: © European Space Agency (ESA) https://www.esa.int/Applications/Observing_the_Earth/Copernicus/Sentinel-2



The data set covers
industrial large-scale
mines and artisanal
small-scale mines

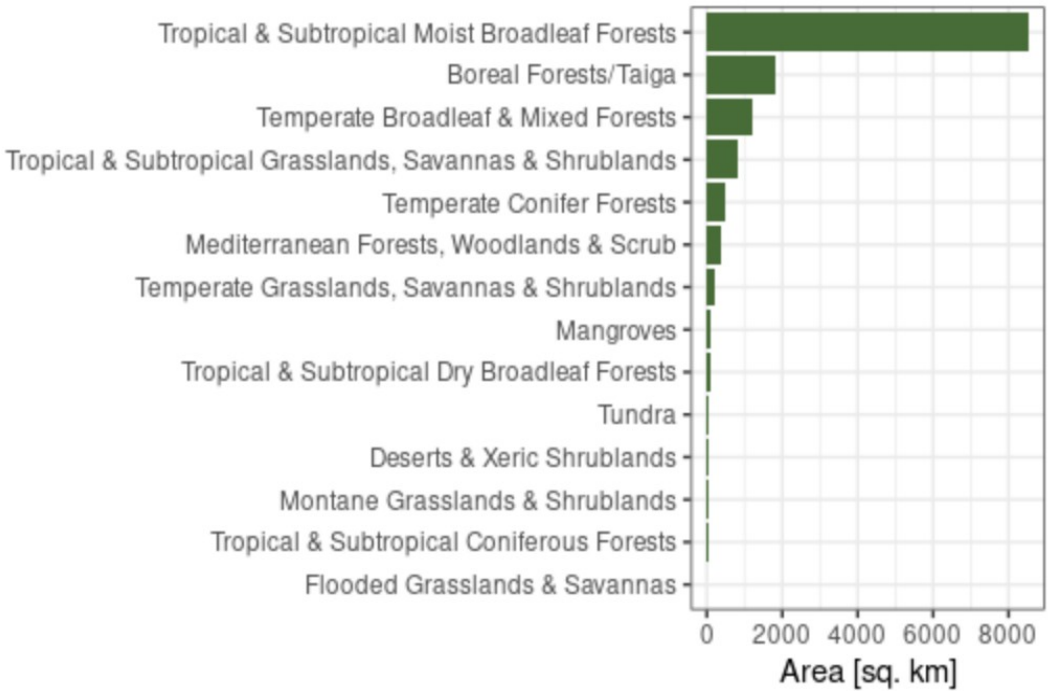


Countries covered

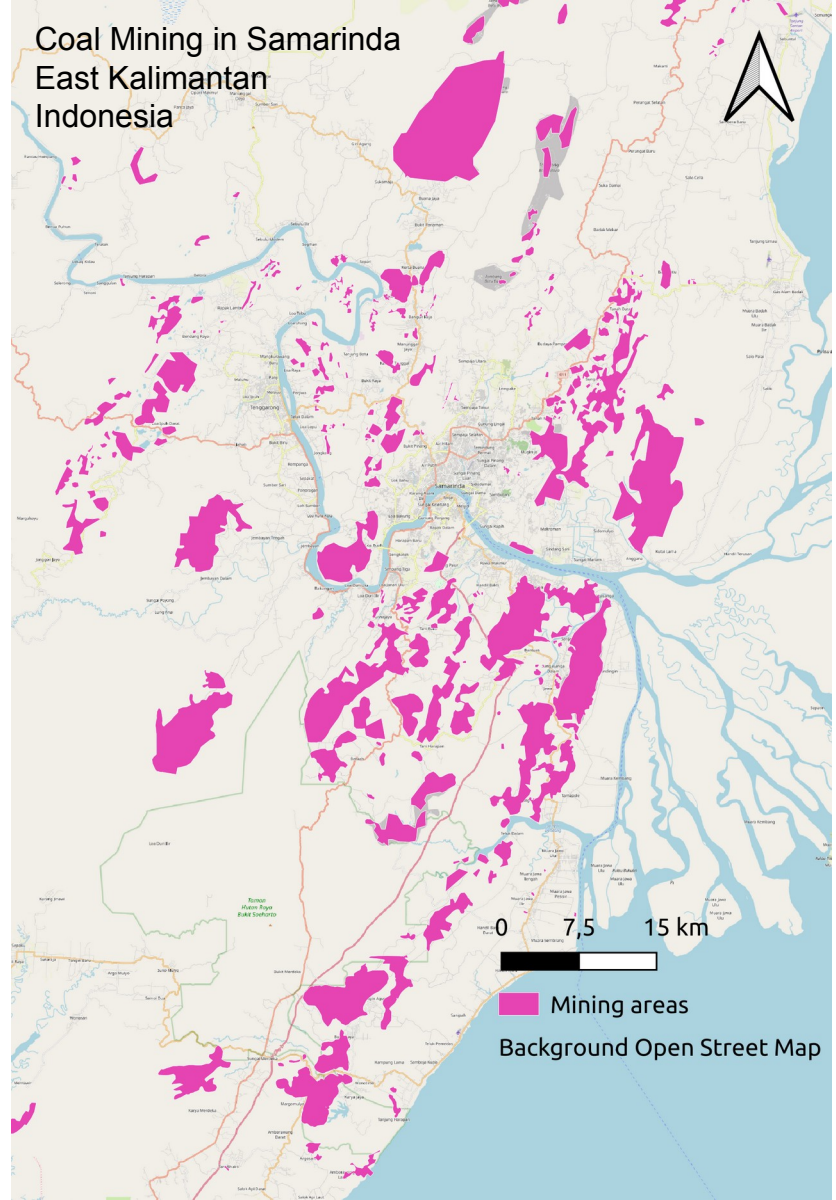


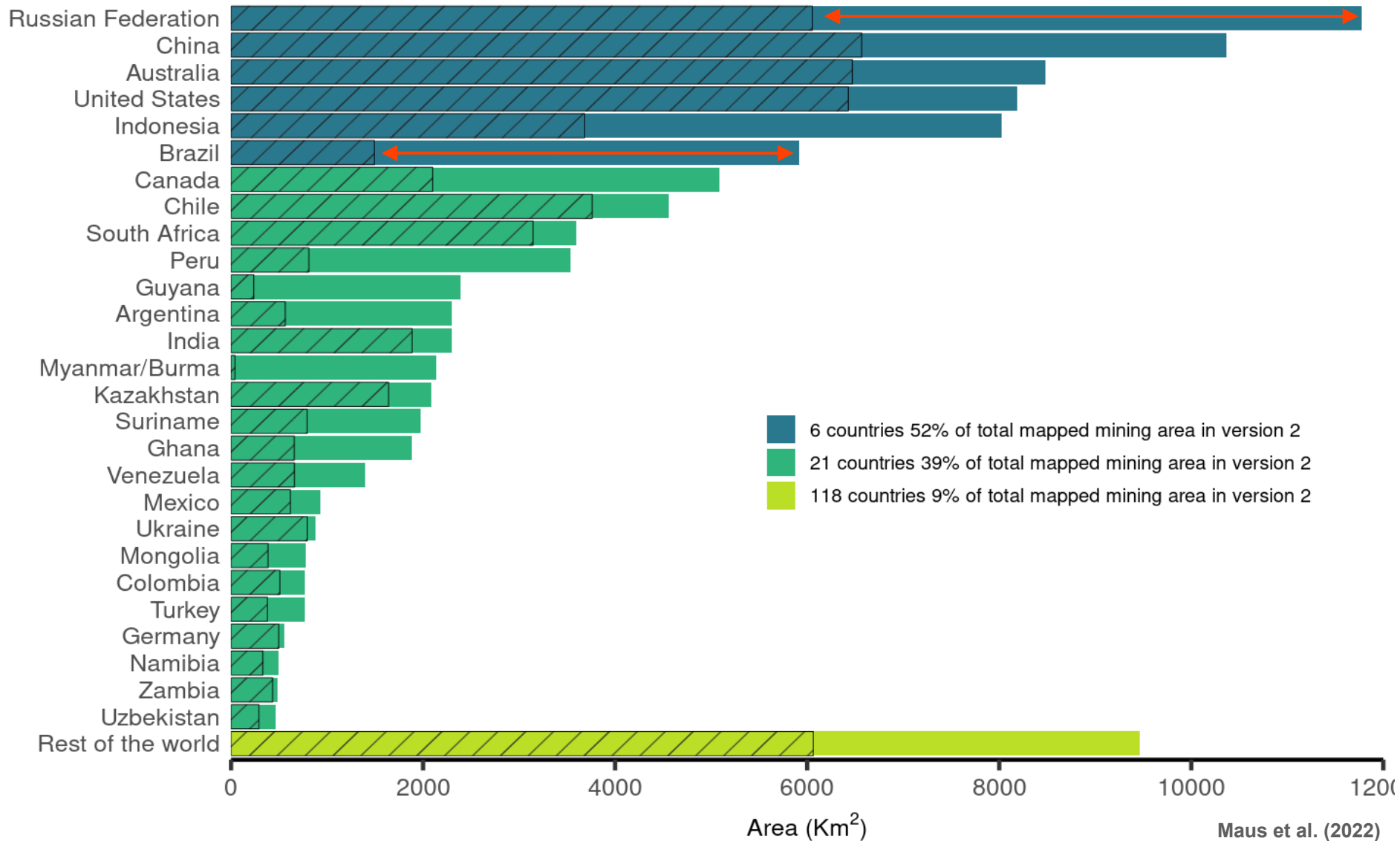
Of 145 countries mapped 15 account for 80% of the mining area

62% (8,533 km²) of forest cover loss taken place within mining areas from 2000 to 2019 has happened in tropical and subtropical forests



Data visualization: www.fineprint.global/viewer

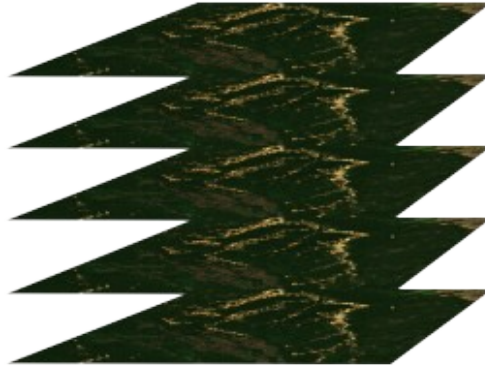




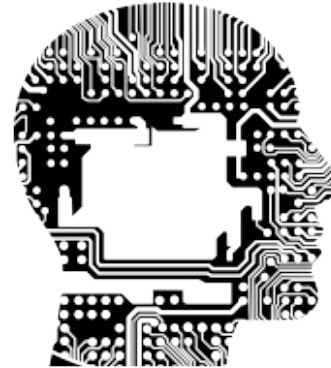
Labeled data



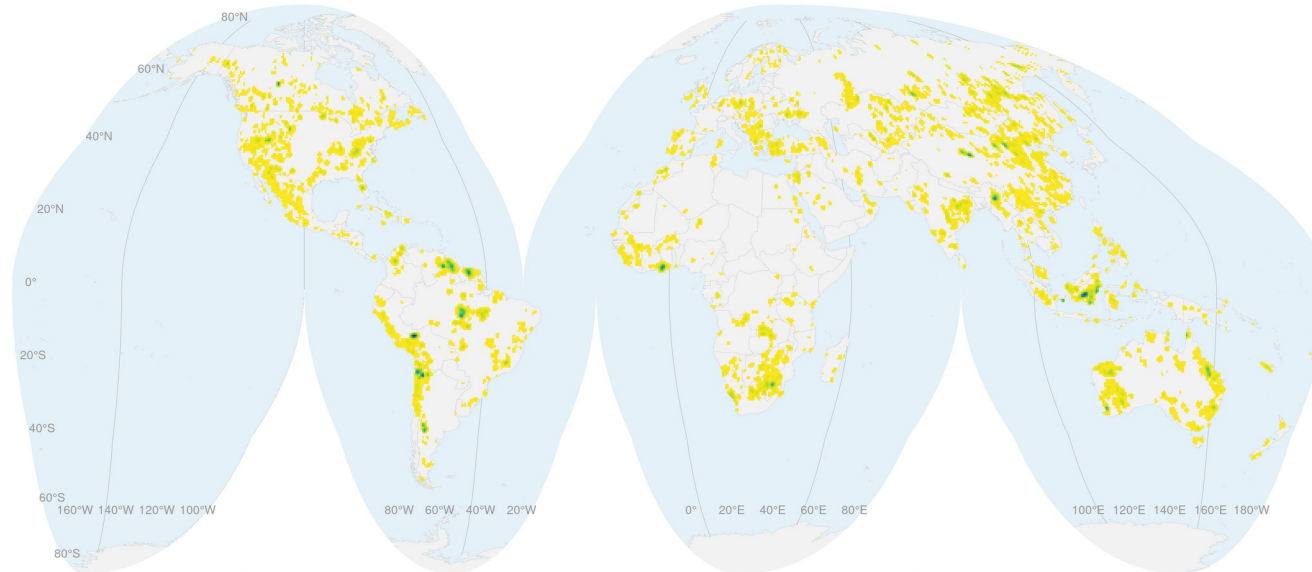
Observations



Algorithm



www.victor-maus.com



Dr Victor Maus

**Institute for Ecological Economics
Vienna University of Economics and
Business**

victor.maus@wu.ac.at

ISIE-SEM Sep 21st, 2022