



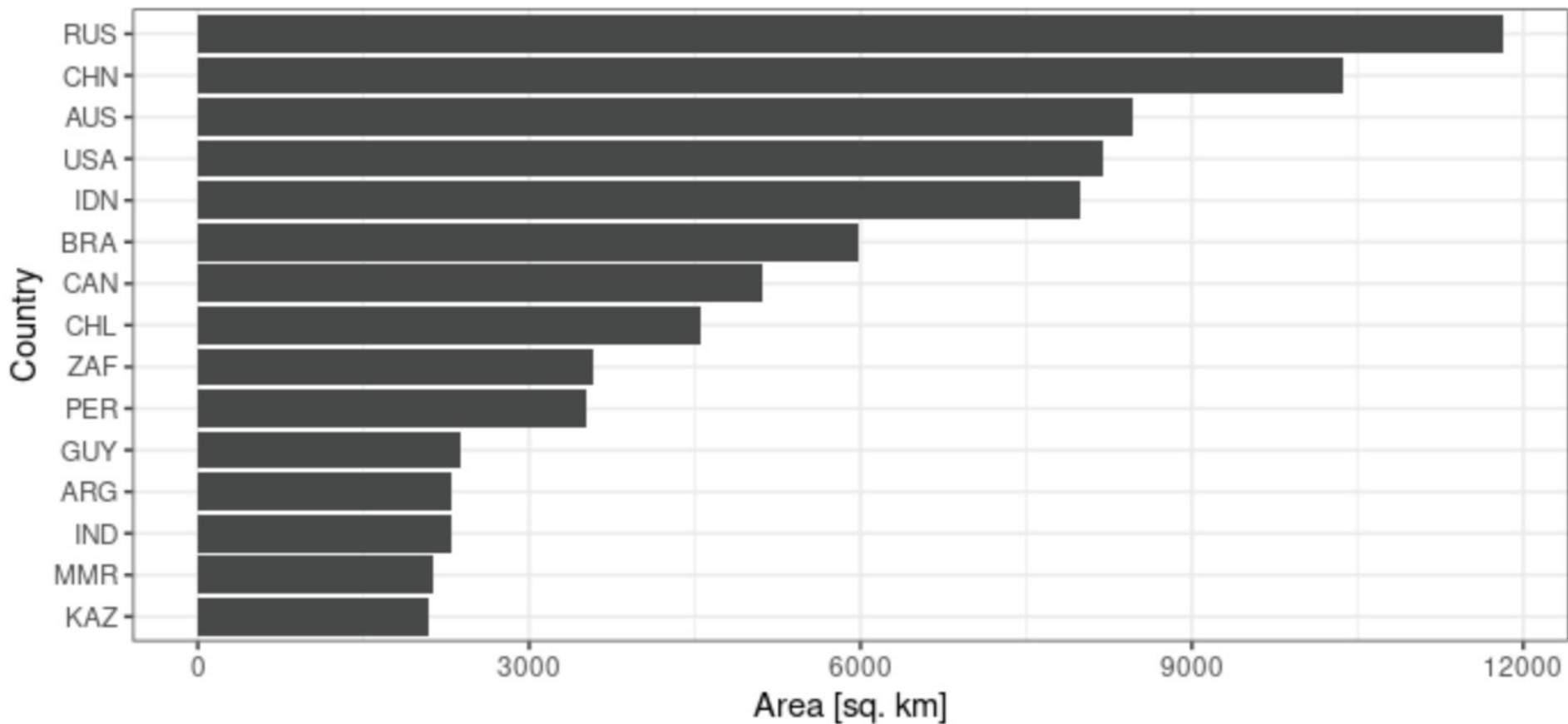
A world map with numerous colored circles (yellow, orange, green, blue) placed over various countries. Each circle contains a number, representing data points for mining. The numbers vary significantly in size and color across the globe, with higher concentrations in North America, Europe, and Asia.

Earth Observation to Improve Global Mining Information for Sustainable Development

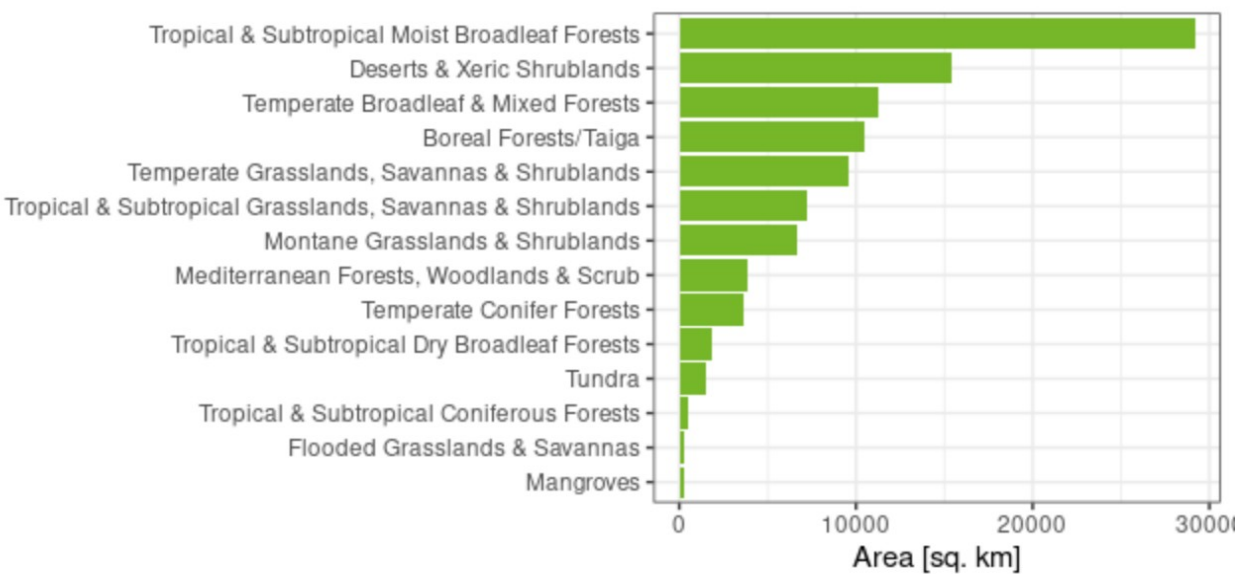
Dr Victor Maus
victor.maus@wu.ac.at

WRF Oct 13th, 2021

The content on these slides is licensed under [CC BY-SA 4.0 license](https://creativecommons.org/licenses/by-sa/4.0/)

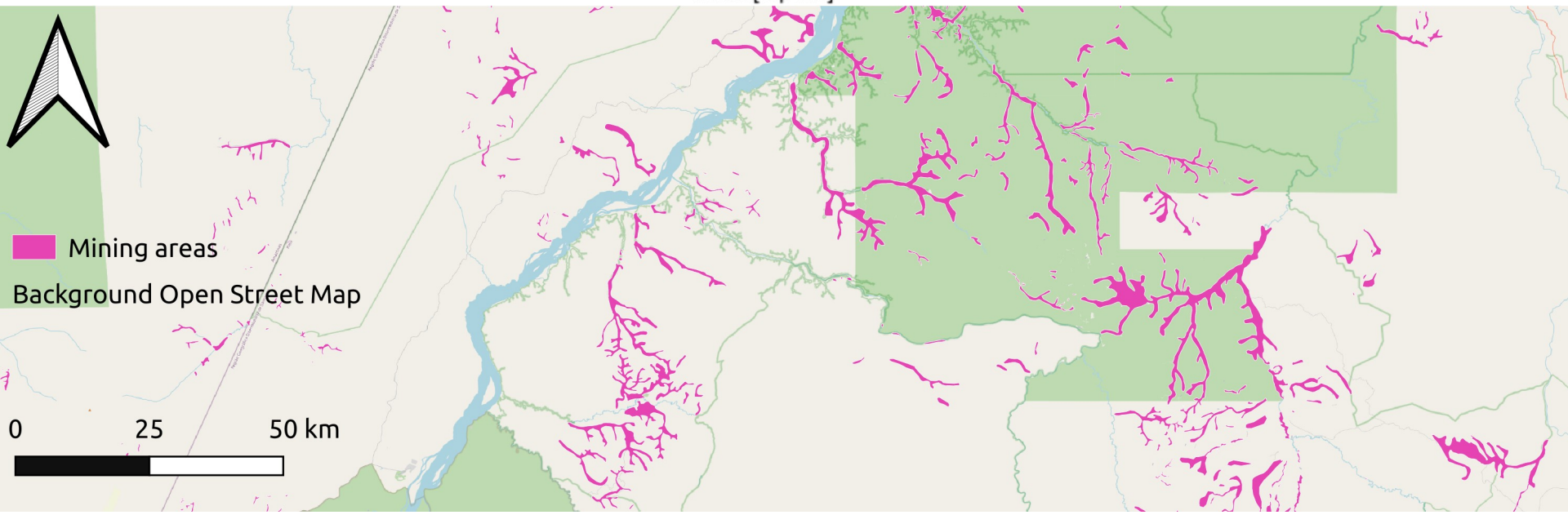


The total mapped mining area was 101,567 km²
15 countries account for 80 % (81,253 km²) of the total area

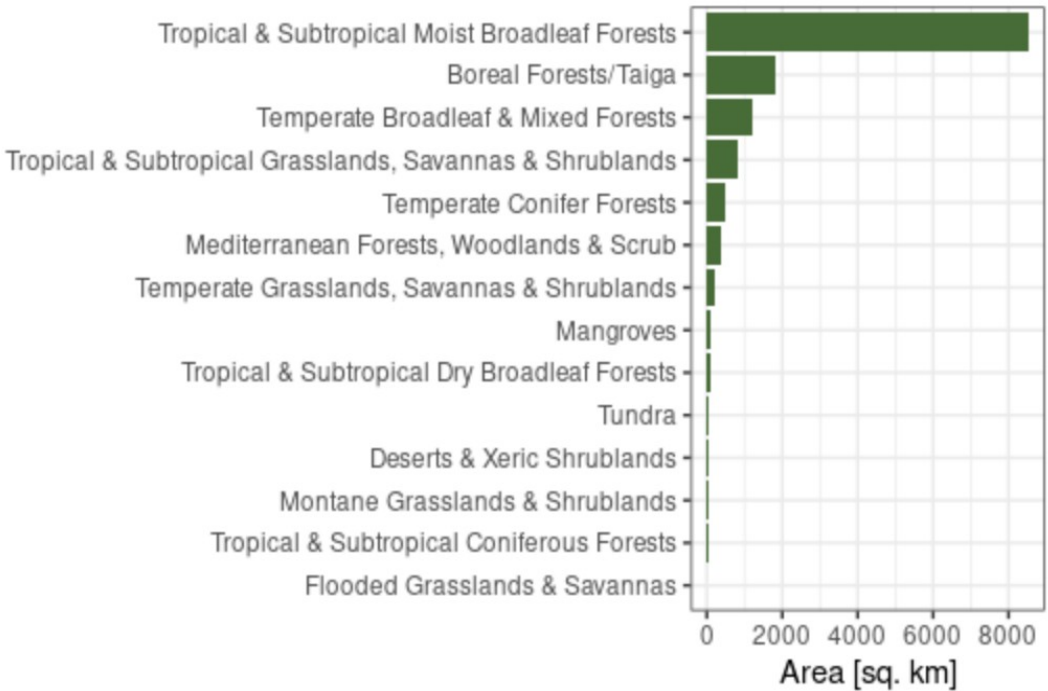


29% (29,171 km²) of the global mining area is within Tropical & Subtropical Moist Broadleaf Forests

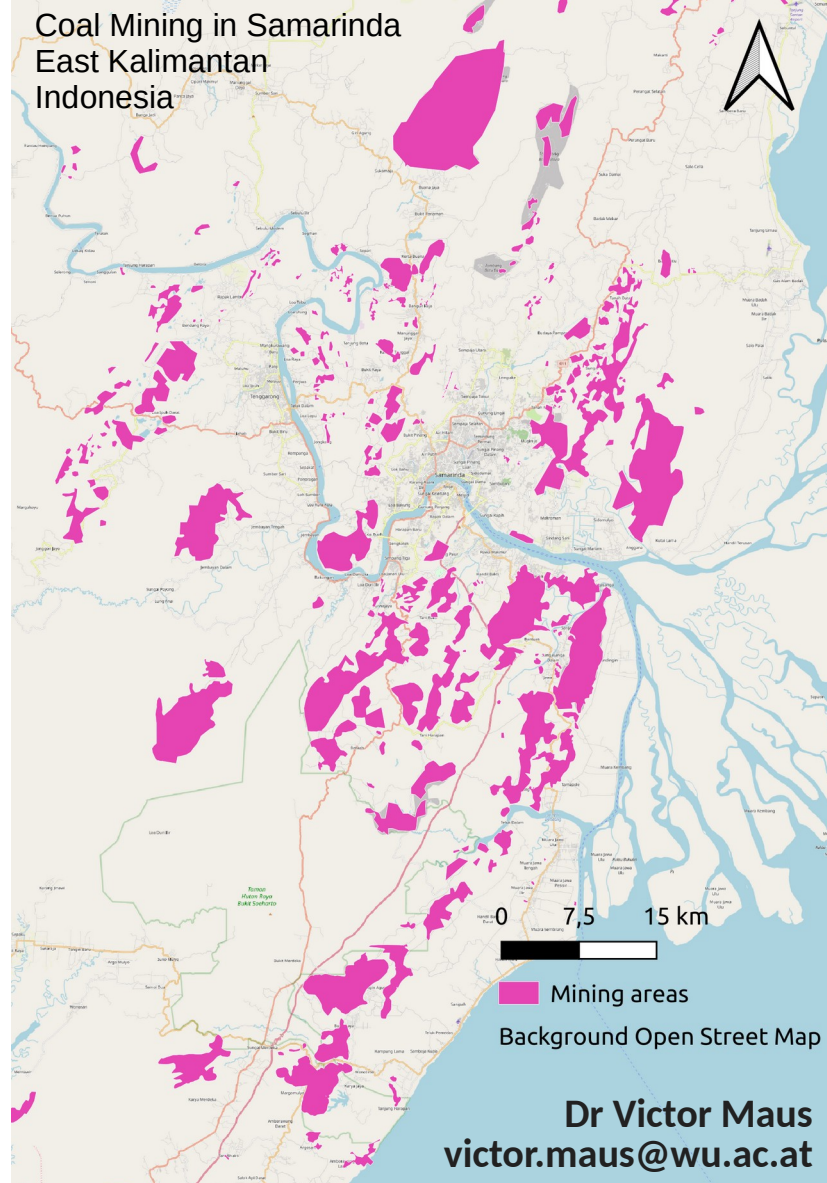
Small scale Gold mining in the Brazilian Amazon (-56.7072,-5.7166)



62% (8,533 km²) of forest cover loss taken place within mining areas from 2000 to 2019 has happened in Tropical & Subtropical Moist Broadleaf Forests



Data visualization: www.fineprint.global/viewer



Dr Victor Maus
victor.maus@wu.ac.at